

Description:

This document describes the steps necessary to connect the NP-660T/NP-880S/NP-612S to a PC running Microsoft Active Sync. Both COM1 (RS-232) serial connection and Ethernet connections are included.

Microsoft ActiveSync is a tool used to connect the PC to another device. Typically ActiveSync is used to synchronize the PC and PDA data (Calendar, Contacts, Tasks and Schedule.) ActiveSync is also a tool for application developers for Nation Instruments LabView PDA, Windows Embedded C++, Visual Studio 2005 and other languages.

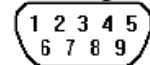
Each device has its peculiarities in relation to the method used to connect Microsoft ActiveSync from the PC to the PDA or Windows CE device. This document will assist the reader in establishing the ActiveSync communications connection from a PC to an IVC Displays NP-660T/NP-880S/NP-612S Windows CE.NET Panel PC.

Requirements:

- RS-232 Null Modem Cable DB9S to DB9S connectors

NP-660T/
NP-880S/NP-612S

Pin Designations



COM1 [RS-232]
COM2 [RS-232]

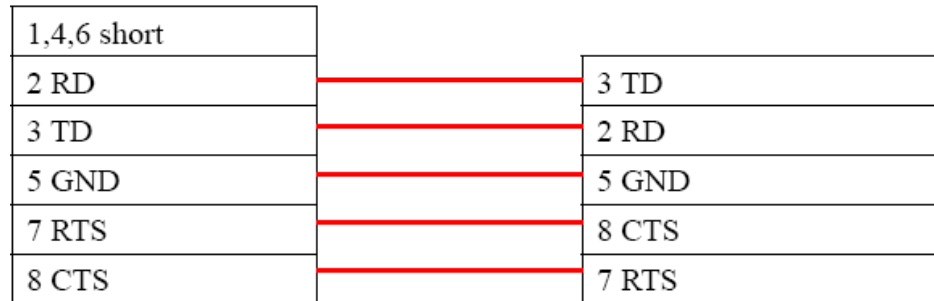
ActiveSync cable

PC COM1

9P D-SUB Female

CN5 COM1 [RS232]

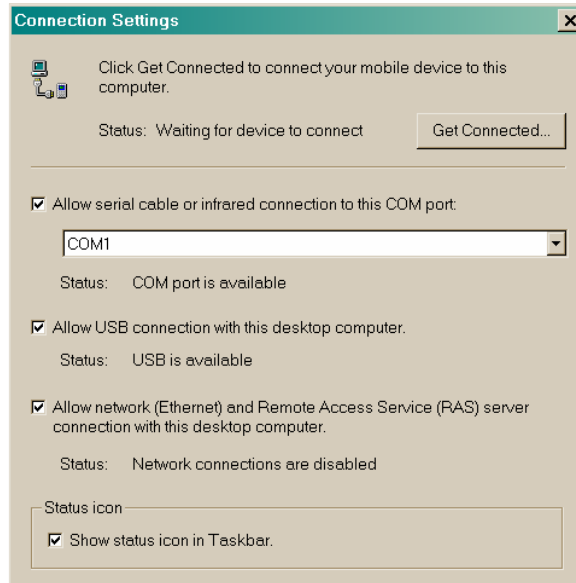
9P D-SUB Female



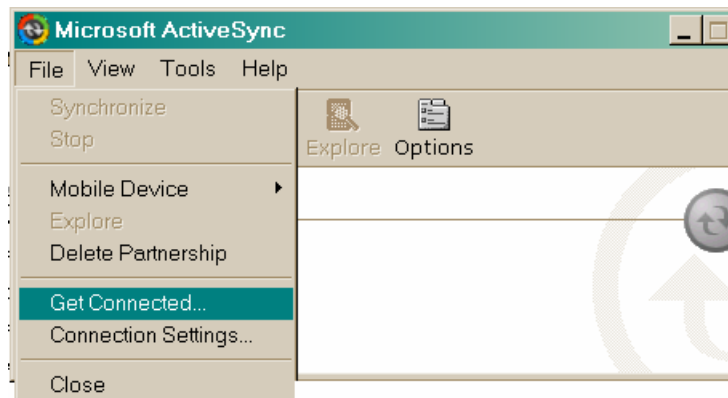
- ActiveSync 3.8 and Up – Download from Microsoft.
<http://www.microsoft.com/windowsmobile/downloads/activesync38.msp>

COM1 (RS-232) Connection Steps:

1. **Configure ActiveSync Connection Settings on the PC to allow serial cable and select COM1.**



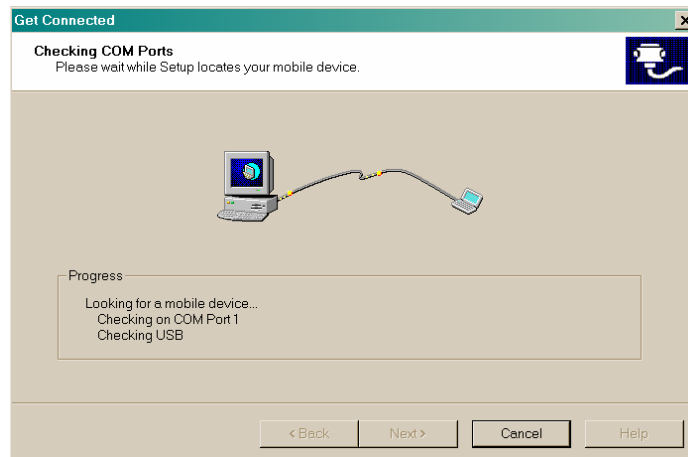
2. **Connect the serial cable to the PC's COM1 Port and to the COM1 [RS232] Port on the Panel PC.**
3. **Power up the Panel PC**
4. **On the PC run ActiveSync.**
5. **From File select "Get Connected."**



6. On the Get Connected dialogue select Next.



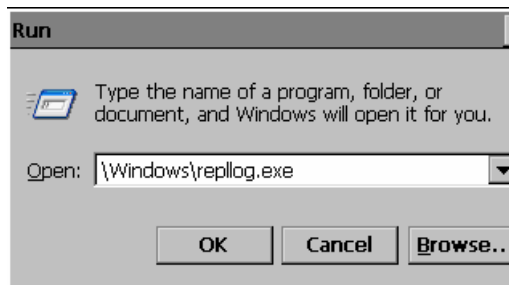
7. Active Sync will then begin to poll the ports for another ActiveSync device.



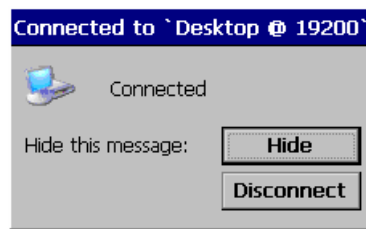
8. On the Panel PC, Start>Run and Browse to the Windows folder.

9. Select the file “repllog.exe” and run it.

Note: The timing is critical. When the PC is polling the PC COM port connected to the unit, execute repllog.exe on the NP-660T/NP-880S/NP-612S. This may take a number of tries to connect.

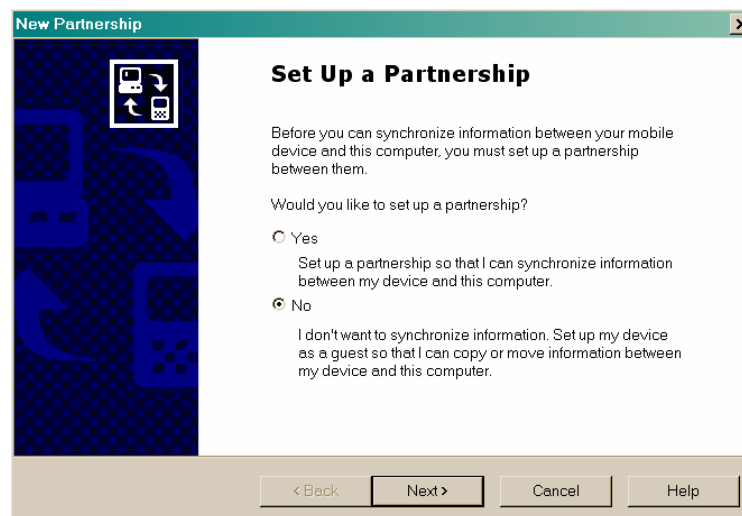


10. When executed, repllog will look for an ActiveSync device on COM1.

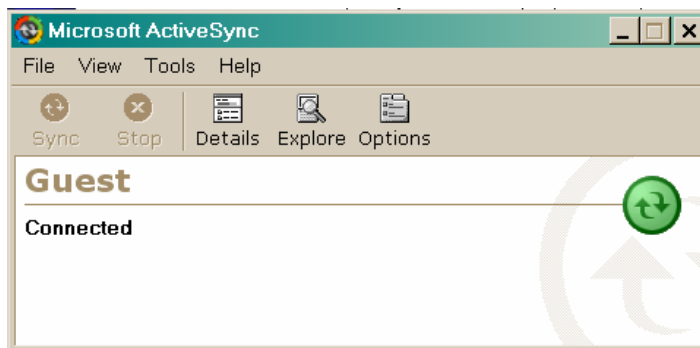


11. On the PC, ActiveSync will then begin to establish a partnership with the Panel PC.

12. You must then select the Partnership type. Select No to continue with RS-232 ActiveSync. Select Yes, to connect Ethernet (see *Ethernet Connection Steps*).



13. It will see the PC and connect.



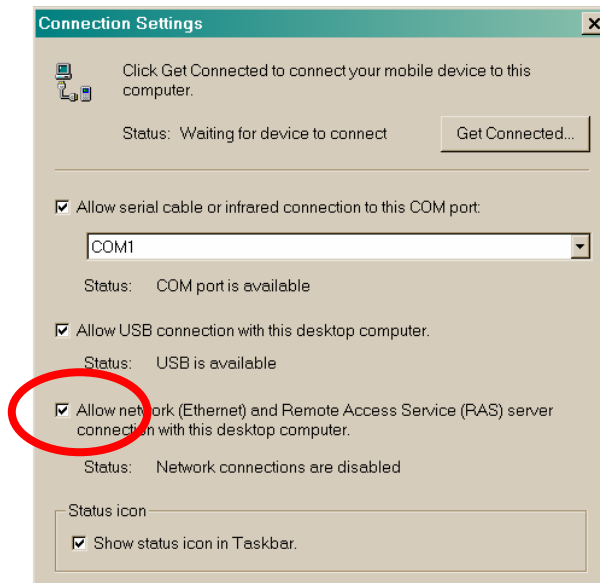
14. On the desktop use CECP to save the registry.

Ethernet Connection Steps:

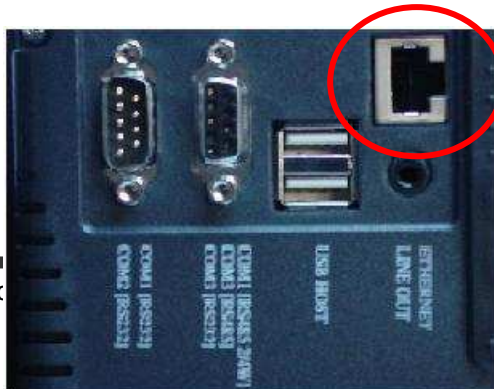
Note: To connect to your Ethernet network you must first follow the steps to connect with COM1. Then disconnect and follow these steps.

Microsoft ActiveSync 4.5 doesn't support Ethernet connect. Please use Microsoft ActiveSync version 3.8.0

- 1. Configure ActiveSync Connection Settings on the PC to Allow Network (Ethernet).**

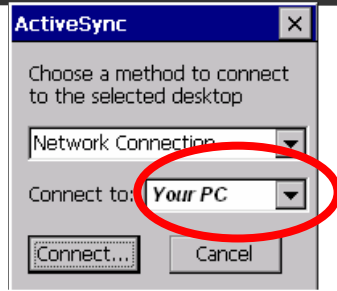


- 2. Connect the Ethernet Port on the NP-660S/NP-880S/NP-612S to your network.**

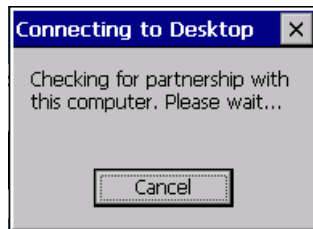


**NP-660S
Ethernet
Port**

**NP-612S
Ethernet
Port**



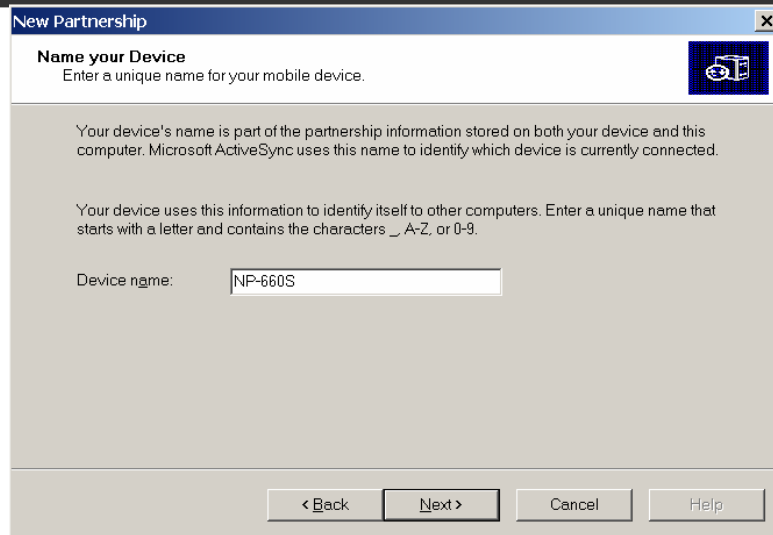
- Then the NP-660T/NP-880S/NP-612S will check the network for an ActiveSync partner.



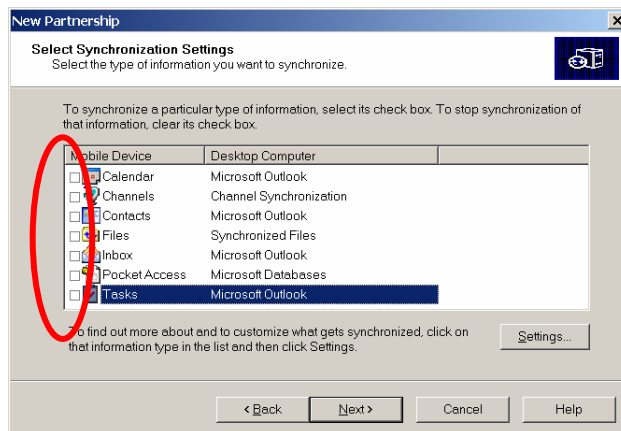
- On the PC ActiveSync will request the Partnership type. Select Yes, to set up a partnership.



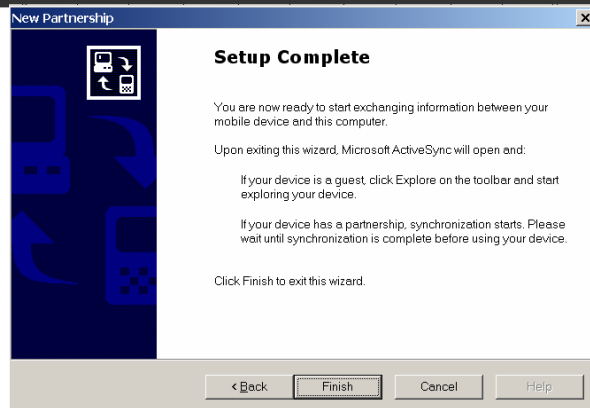
- Enter a Device name. The name is any name you wish for the NP-660T/NP-880S/NP-612S.



9. Clear all of the Check boxes for Synchronization.



10. Click Finish.



11. You are connected on the network.

