

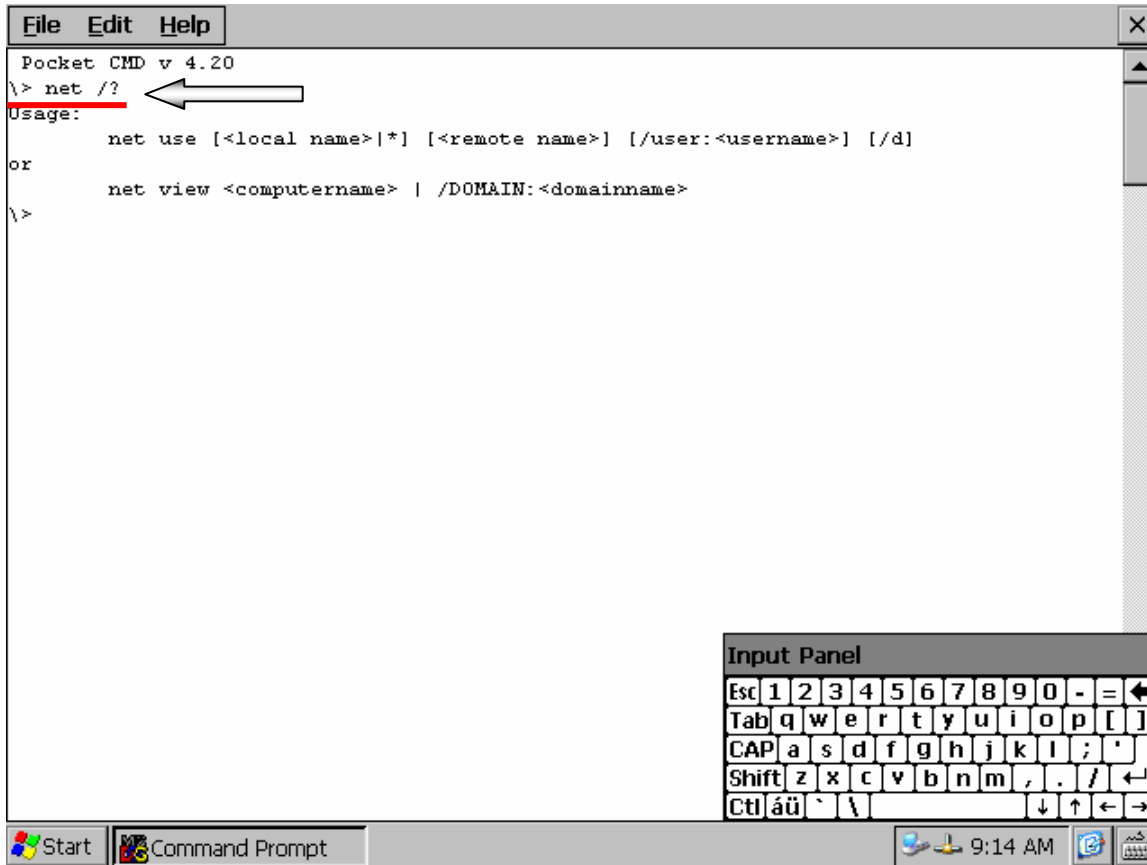


The net command is used to update, fix, or view the network or network settings. Listed in the Syntax we have listed each of net commands.

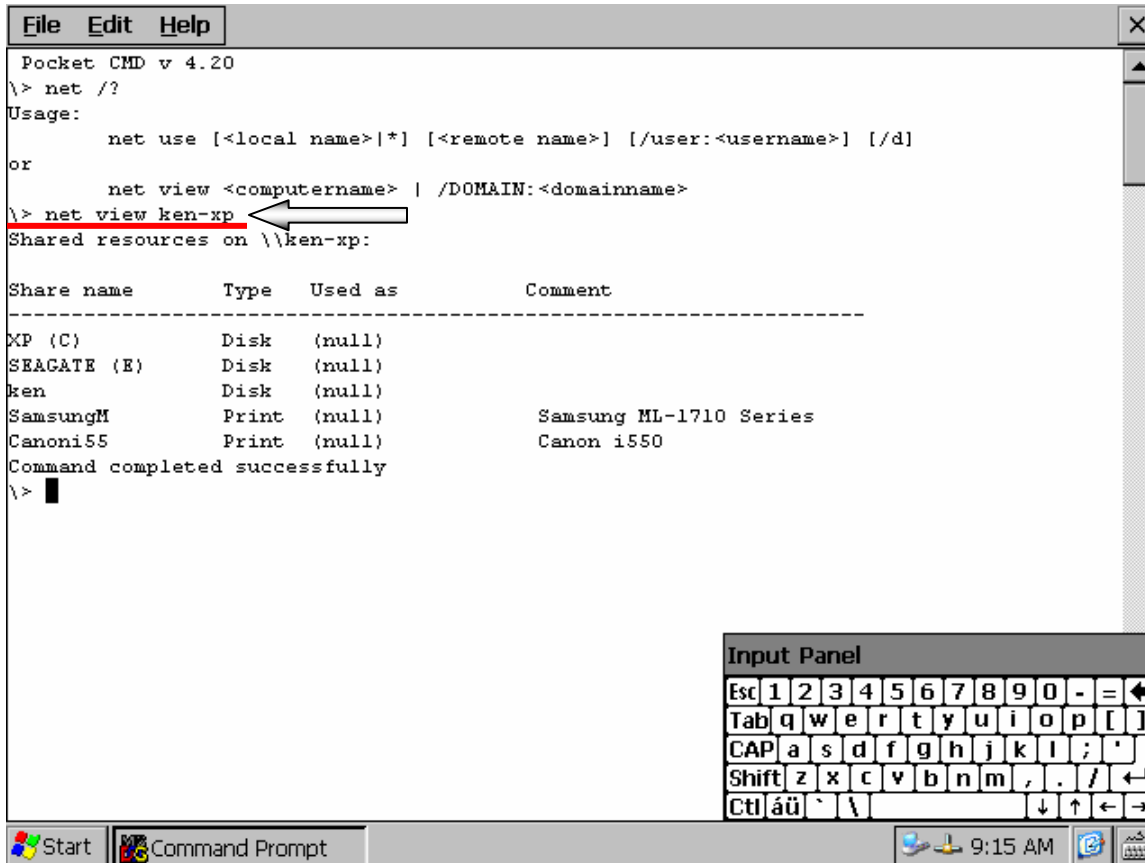
Note: The net command line settings are not persistent and will need to be established on each boot. A batch file executes on boot is the best solution.

NET USE	Net use [<local name> *] [<remote name>] {/user:<username>} [/d]	
	<local name>	Specifies the name you wish to assign to a shared directory.
	<remote name>	Specifies the name of the computer sharing the resource.
	/user:<user name>	Specifies the name of the user using the resource.
Net VIEW	Net view <computername> /DOMAIN:<domainname>	
	<computername>	- Specifies the name of the computer whose shared resources you want to see listed.
	/DOMAIN:<domainname>	Specifies the name of the domain whose computer names you want to view.

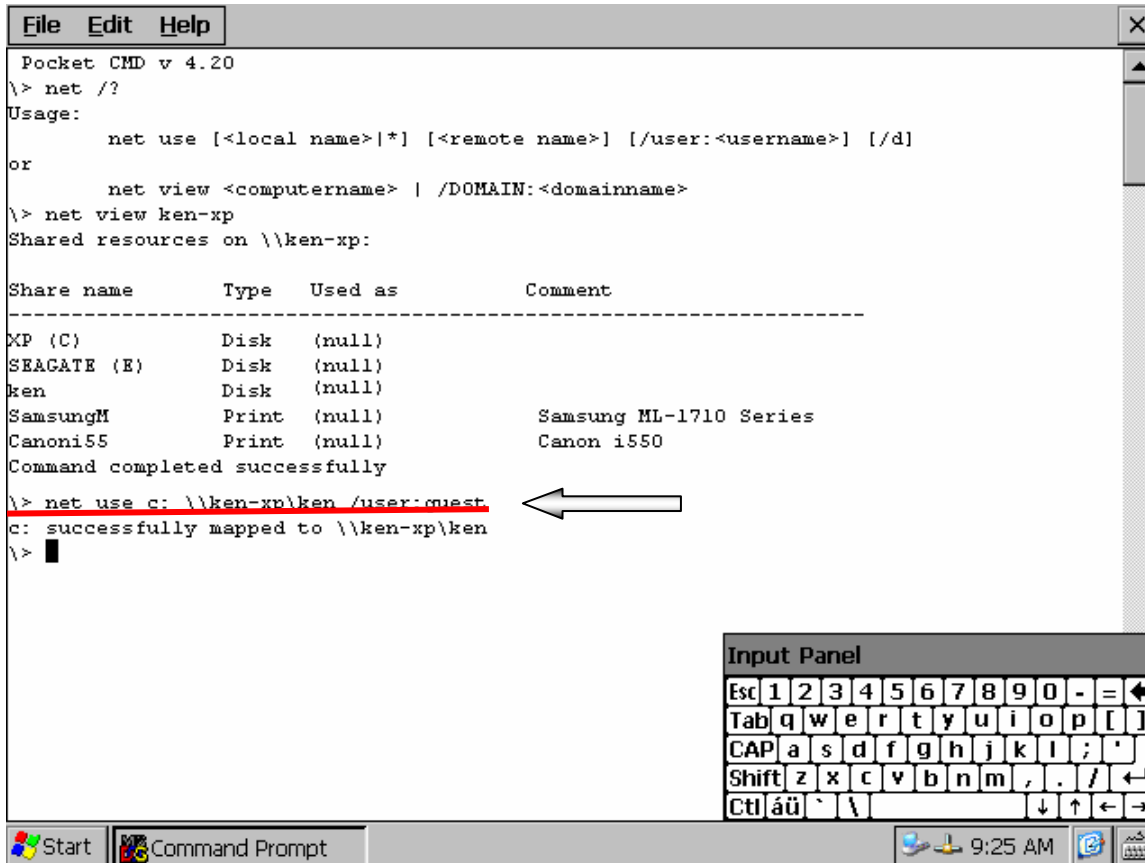
NET /? - Displays help for usage of the net command.



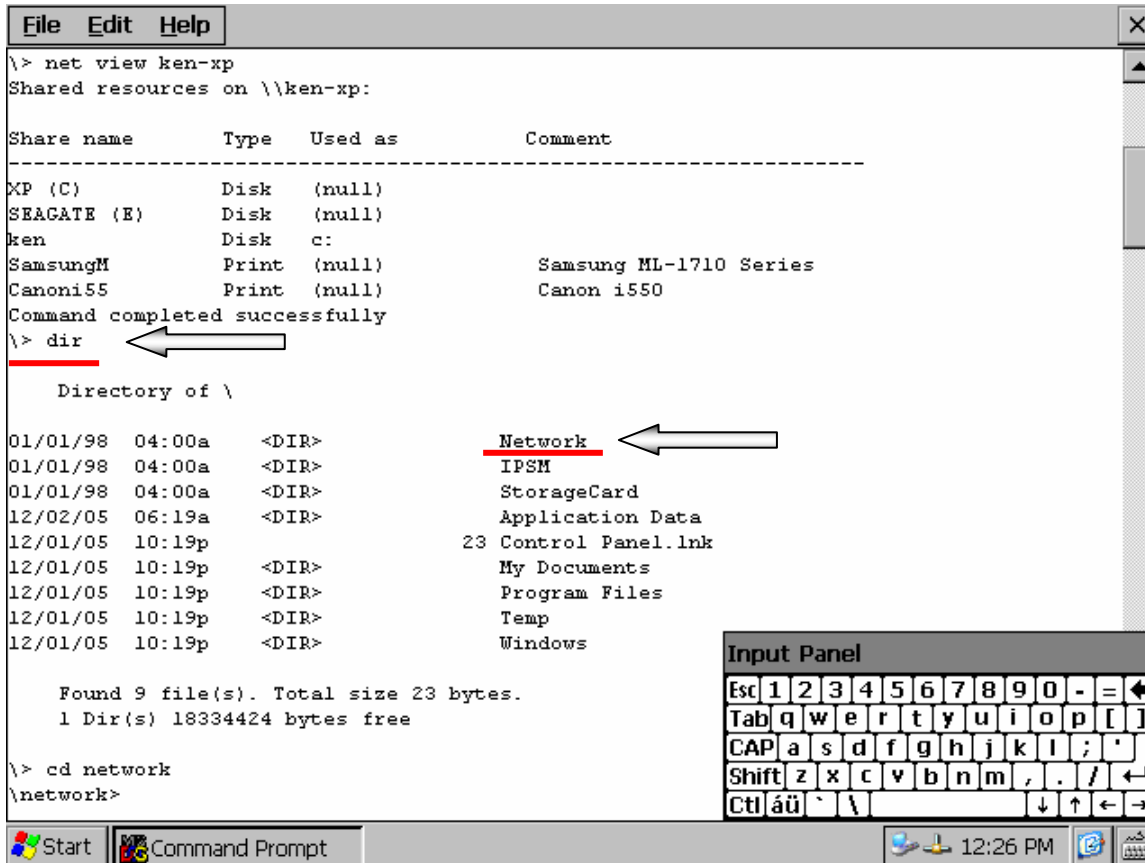
Net view ken-xp - will display the shared names are available on shared resources ken-xp. Disk drives and printers are both listed and may be attached to with the net use command.



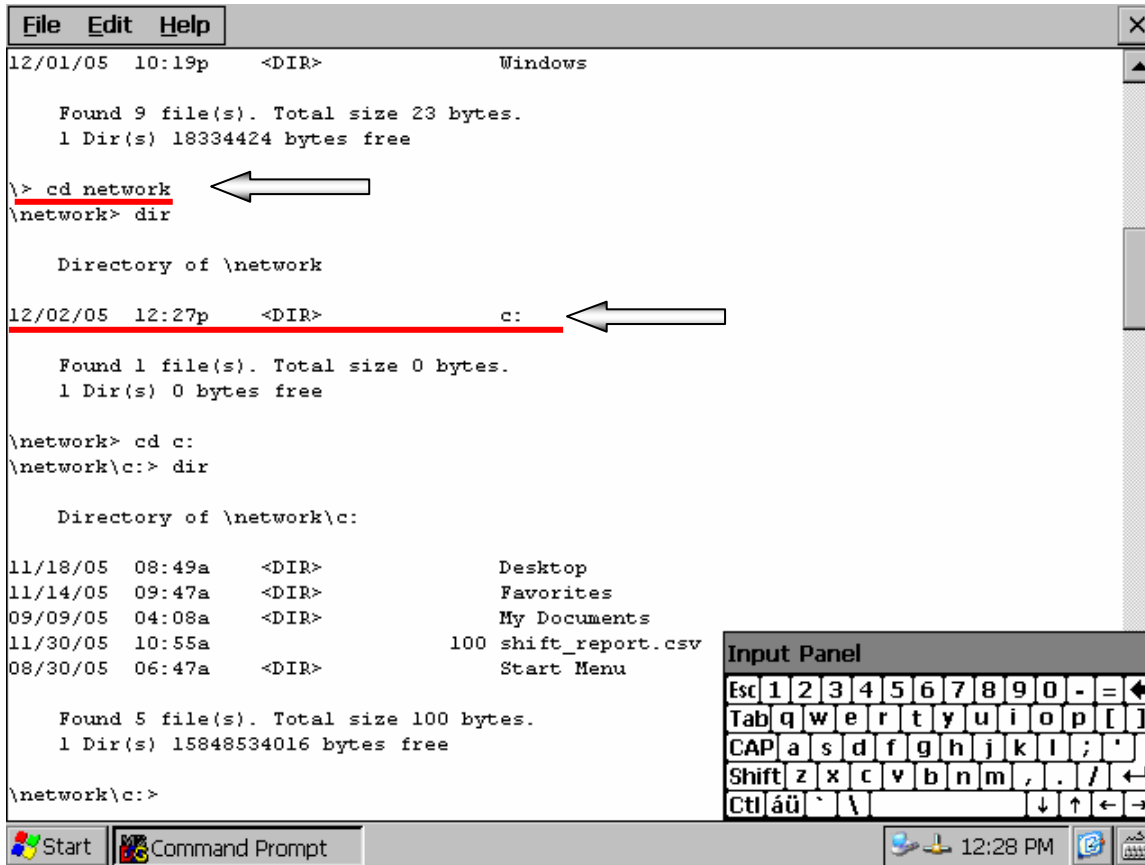
Net use c: \\ken-xp\ken /user:guest - is a request to the systems to assign the name c: to the shared resource ken found on the shared resource name ken-xp.



Dir - shows Network as a directory

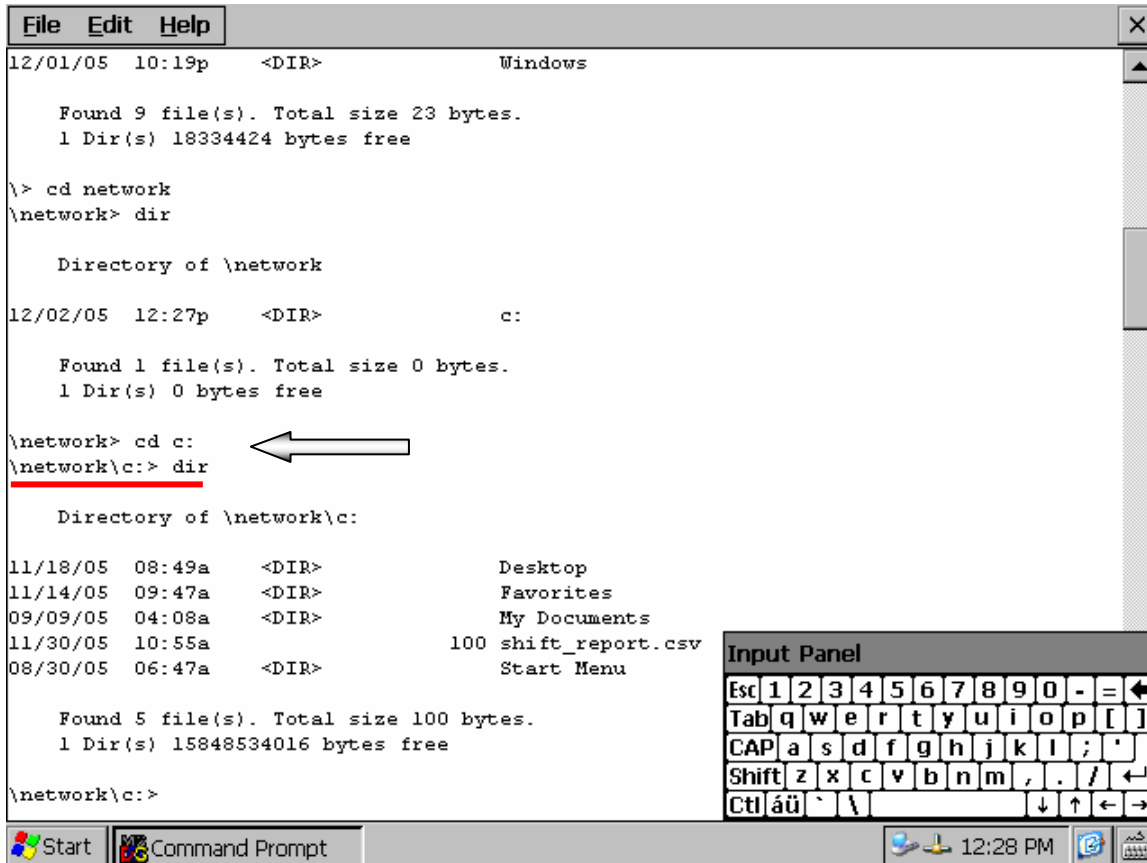


cd network - change directory to network and the directory has a c: resource.



cd c: - change directory to c:. Check the directory to see the shared resources available.

\network\c: is now a valid path to the shared resources on the network.



Sample Batch File:
(for the example above)

```

Echo off
Net use c: \\ken-xp\ken /user:guest
Exit
  
```