

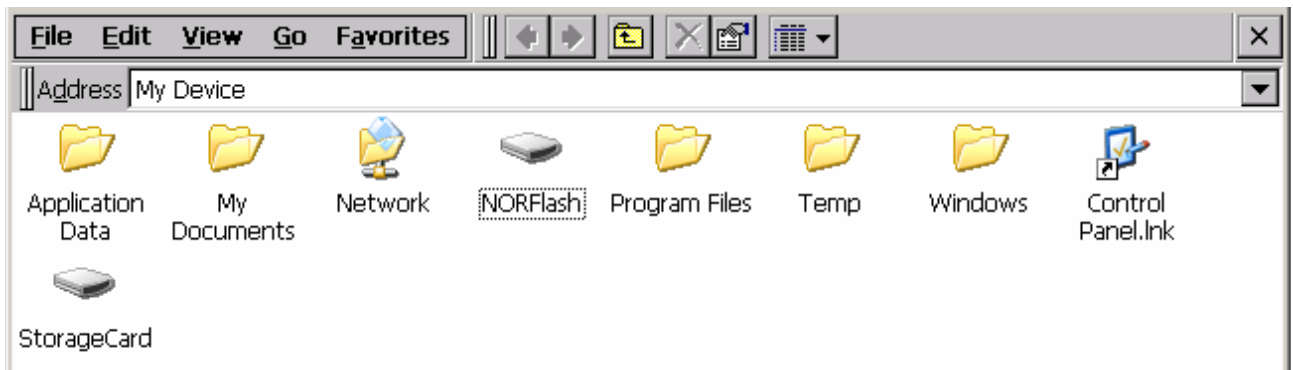
**Description:** This application note is intended to assist the system developer in the installation of Indusoft Web Studio on the IVC Displays Windows CE .NET 5.0 panel PC.

**Windows CE Panel PC Runtime Configuration**

1. Decide where you will store your Indusoft Web Studio application.

Storage Options:

- A. Compact Flash Card ( recommended) – The system refers to the CF Card as StorageCard.
- B. USB Flash Drive – The system refers to this as HardDisk.
- C. D.O.M. – (When present) – The system refers to this as HardDisk.



2. Format the selected storage media.

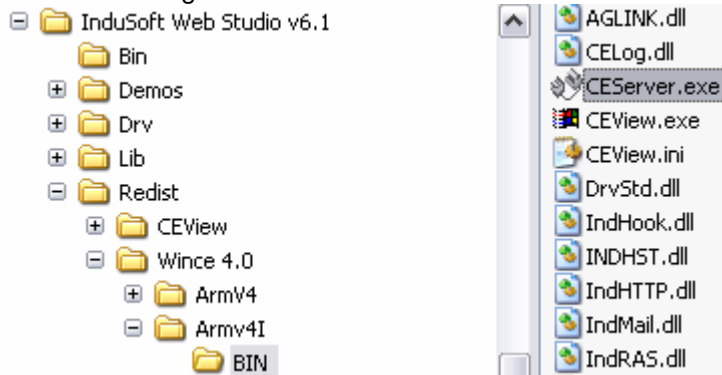
- A. On your PC, from Windows Explorer, select the Removable drive and Right click Format the drive.

*Note: Formatting the selected storage media will insure the integrity of the FAT.*

3. From the PC copy CEServer.exe to the selected storage.

- A. The NP-660T, NP-880S, NP-610S and NP-612S use the ARMV41 version of CEServer.exe.

Copy the Program Files\InduSoft Web Studio v6.1\Redist\Wince 4.0\Armv41\BIN\CEServer.exe to the Storage Selected.

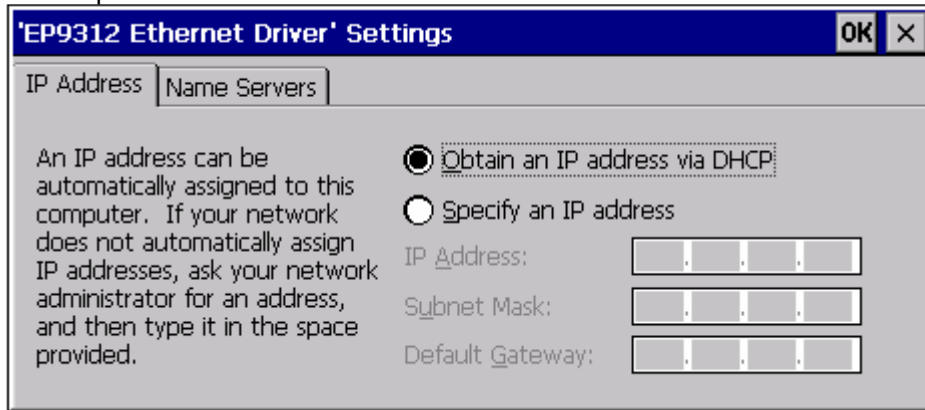


Note: Use a CF card reader on your PC to copy the CEServer.exe on to the CF card. Use a PC USB port for USB Flash Drive. This may also be done using ActiveSync to the Windows CE Panel PC.

B. The NP-700WX, NP-612X, NP-615X use the Xscale version of CEServer.exe.

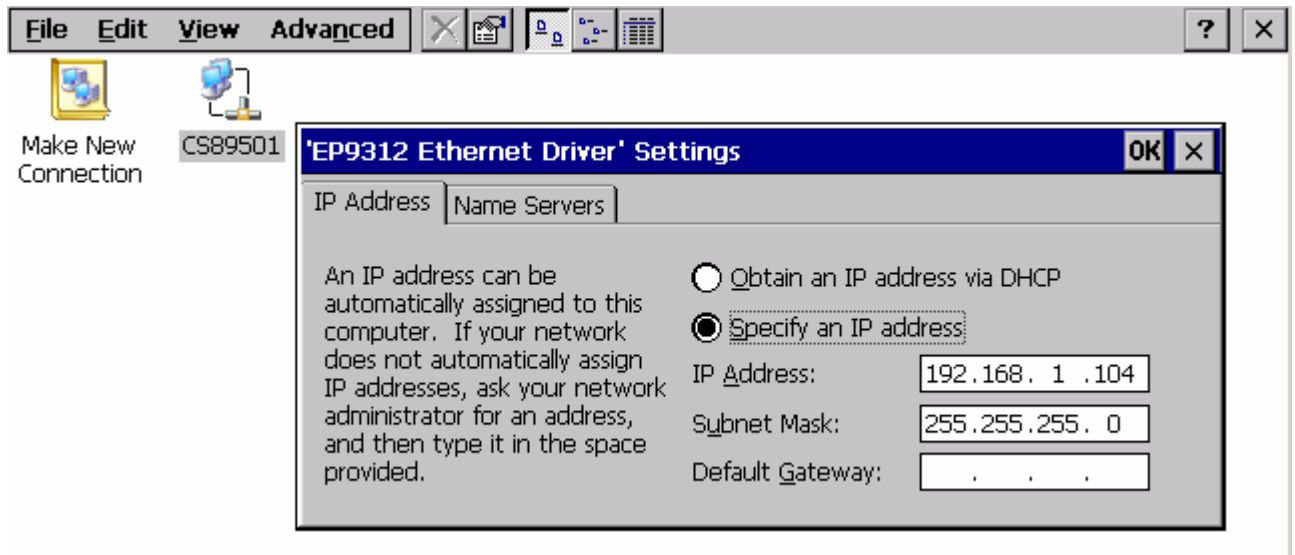
Copy the Program Files\InduSoft Web Studio v6.1\Redist\Wince 4.0\XScale\BIN\CEServer.exe to the Storage Selected.

4. Plug the selected storage in to the Windows CE panel PC.
5. Connect the PC and the Windows CE panel PC to your network. The Windows CE panel PC by default is set up for DHCP network.



Note: Direct connection from the PC to the Windows CE panel PC will require an Ethernet cross over cable. You will also have to set the PC IP address and Subnet mask and the Windows CE panel PC IP address and Subnet mask. Note: The Subnet Mask must match.

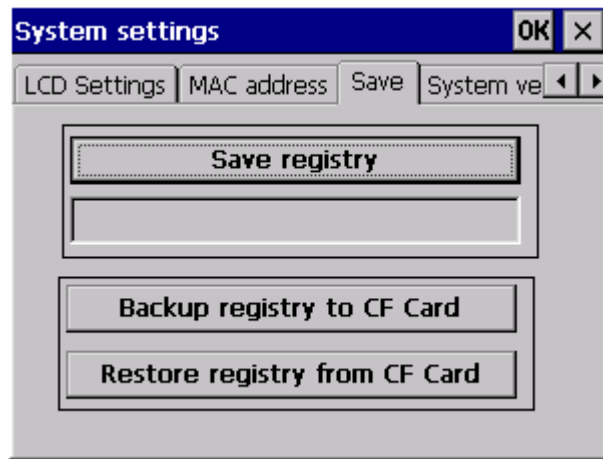
To change the Network settings select Start>Settings>Network and Dial-up Connections.



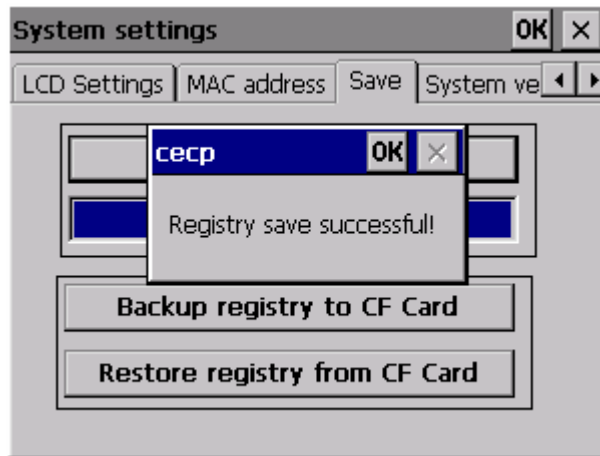
*Note: After making changes on the Windows CE panel PC you must use CECP to save the registry. If not the settings will be lost when you reboot.*



Select the Save tab then Save Registry.



Registry is saved.



6. Execute CEServer.exe

From the Windows CE desktop select Start>Run>Browse and select your HardDisk or Storage card, where you copied the CEServer.exe from your PC. Then select CEServer.exe. Select OK to run CEServer.exe.



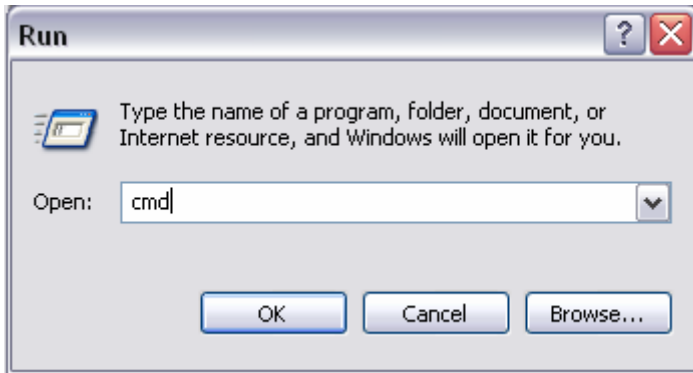
**Development System PC Configuration**

- To insure the PC and the Windows CE panel PC are able to communicate, Ping the IP address of the Windows CE panel PC from the PC.

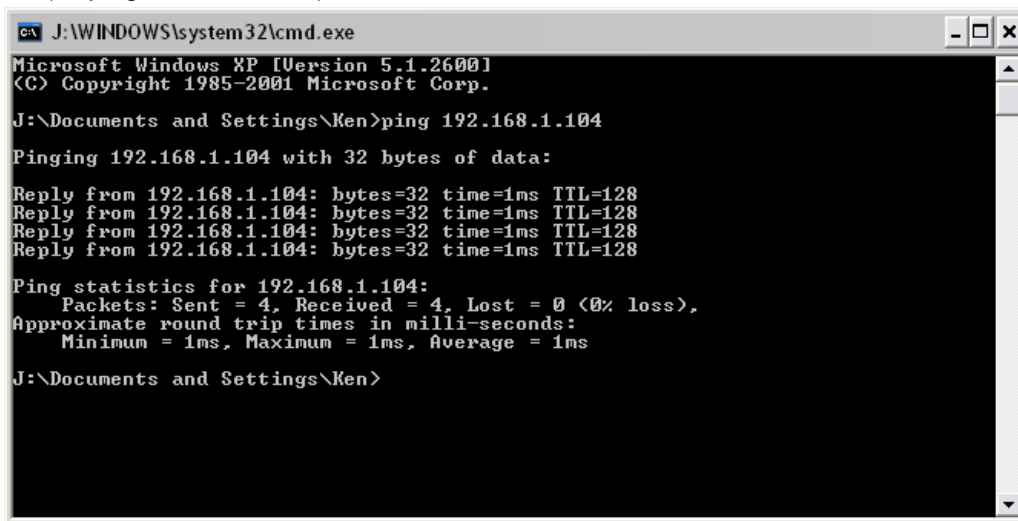
On the PC select Start>Run



Enter cmd and select OK.

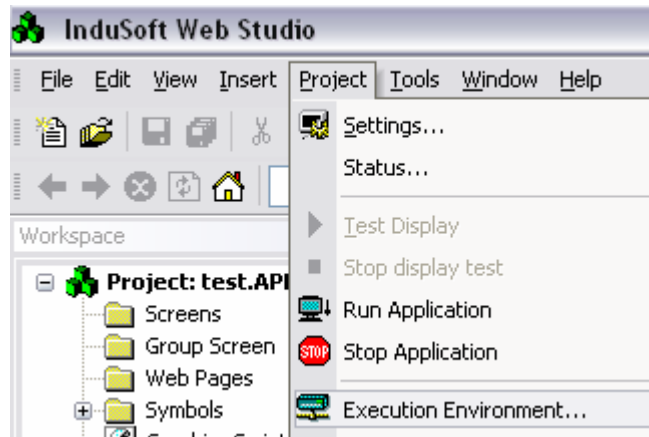


A command line window will display. Enter ping followed by the IP address of the Windows CE panel PC. (ie. ping 192.168.1.104)

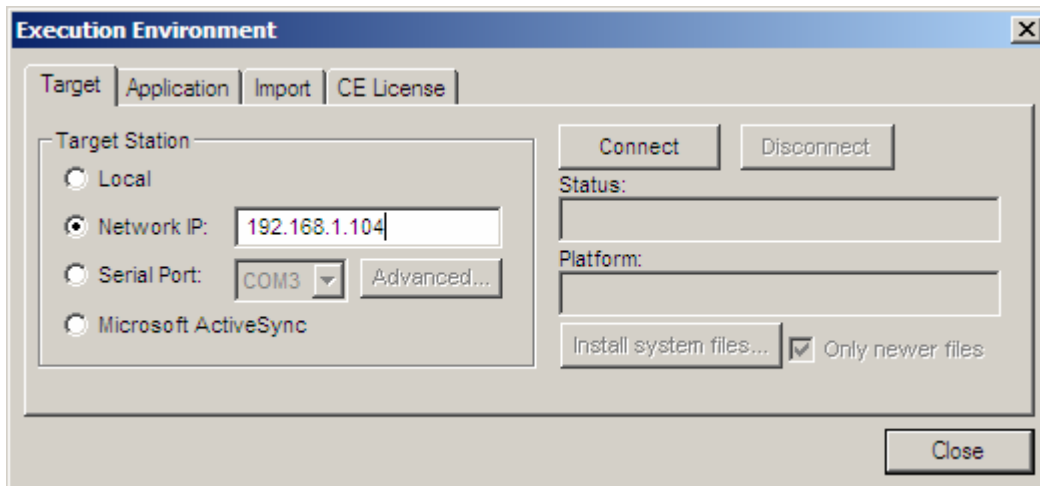


If you do not receive a reply the PC and the Windows CE panel PC are not communicating. To close the command line window type 'exit'.

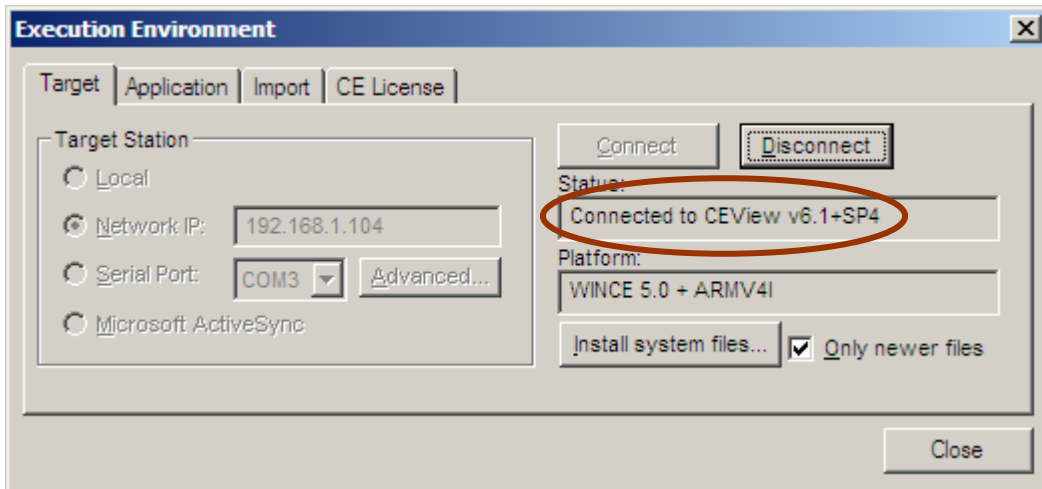
8. From Indusoft Web Studio select Project>Execution Environment or the Icon



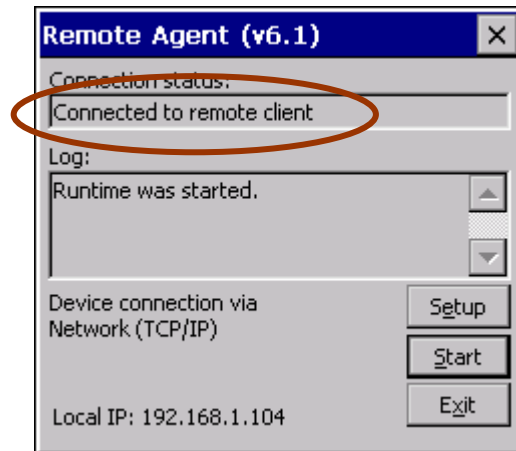
9. Select the Network radio button and enter the Windows CE panel PC IP address and then click the Connect button.



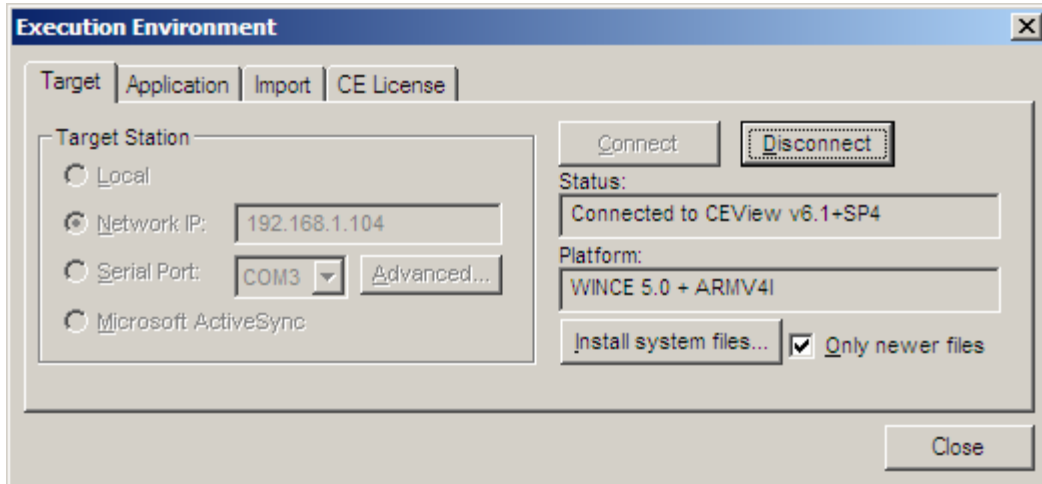
10. The Status line will inform you if the PC is connected to the Windows CE panel PC.



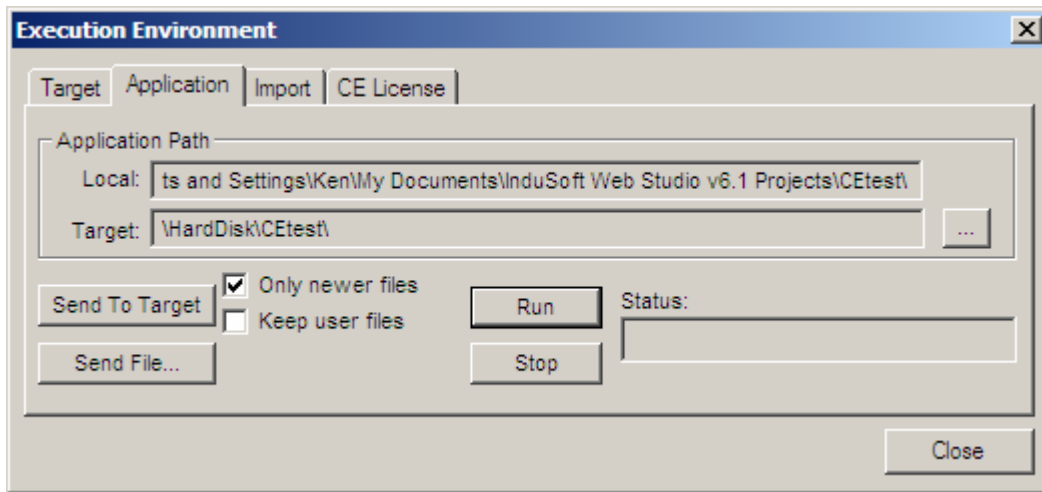
Remote Agent on the Windows CE panel PC with status connected.



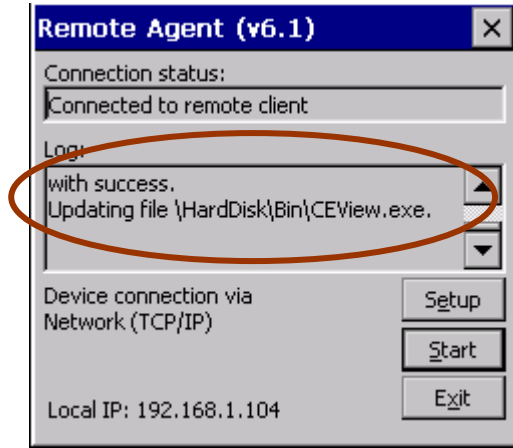
11. Select the Install system files button. You will see the files being copied in the Remote Agent windows on the Windows CE panel PC.



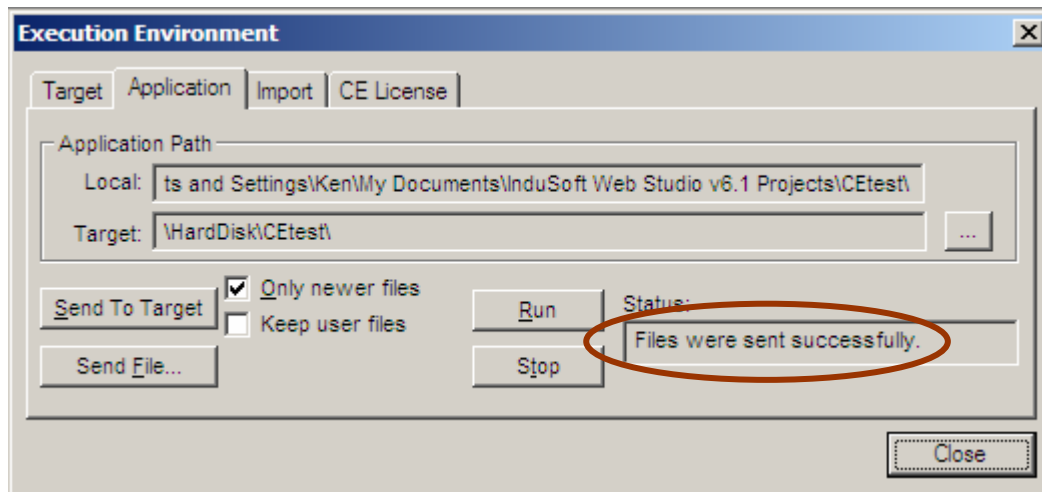
12. When the system files are installed then select the Application tab. Then select the 'Send To Target' button to Upload the Indusoft application to the Windows CE panel PC.



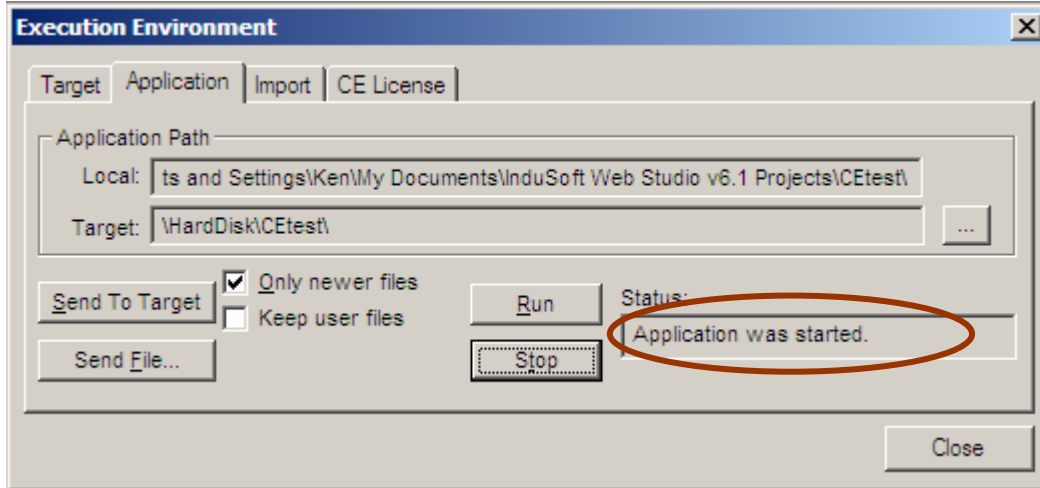
13. You will see the files being copied in the Remote Agent windows on the Windows CE panel PC.



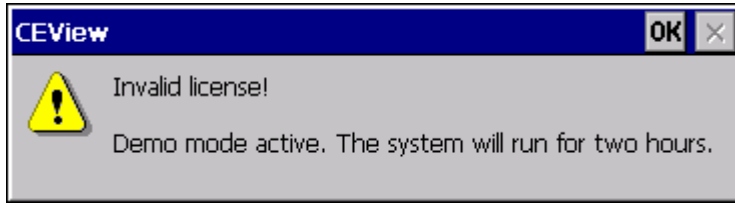
14. The Status line will inform you when the file upload is successful.



- To test your application you may select Run from the Application tab of the Execution Environment on the PC or the Remote Agent Start button, on the Windows CE panel PC.

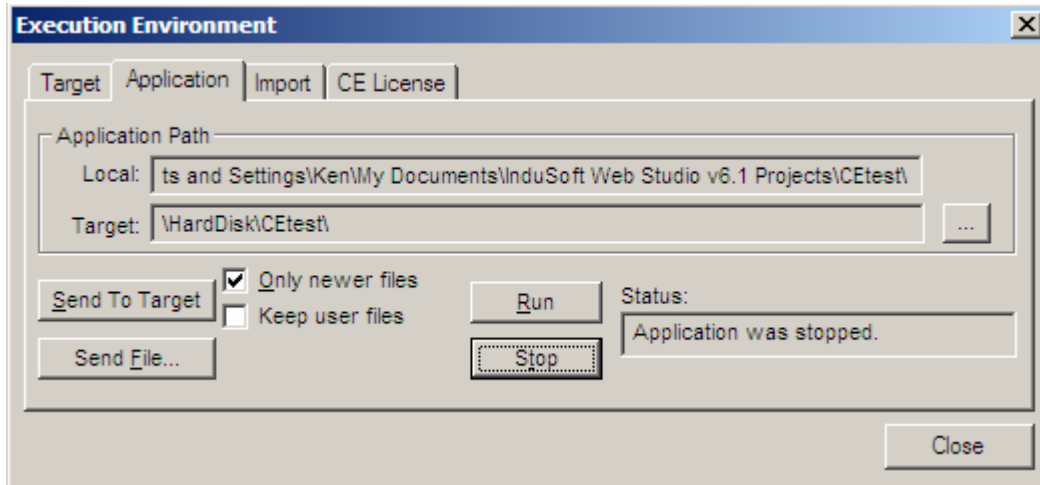


If your Windows CE panel PC is not licensed for Indusoft Web Studio runtime, you will be notified that the system in Demo mode will only run for two hours.

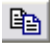


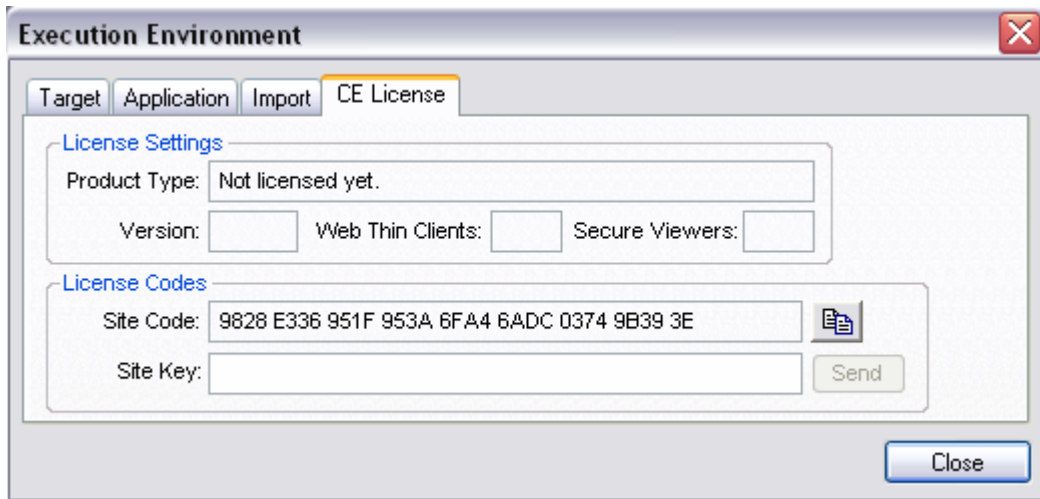
- To stop the application on the Windows CE panel PC select the Stop button on the Execution Environment, Application tab form.

The status line will inform you that the application was stopped.

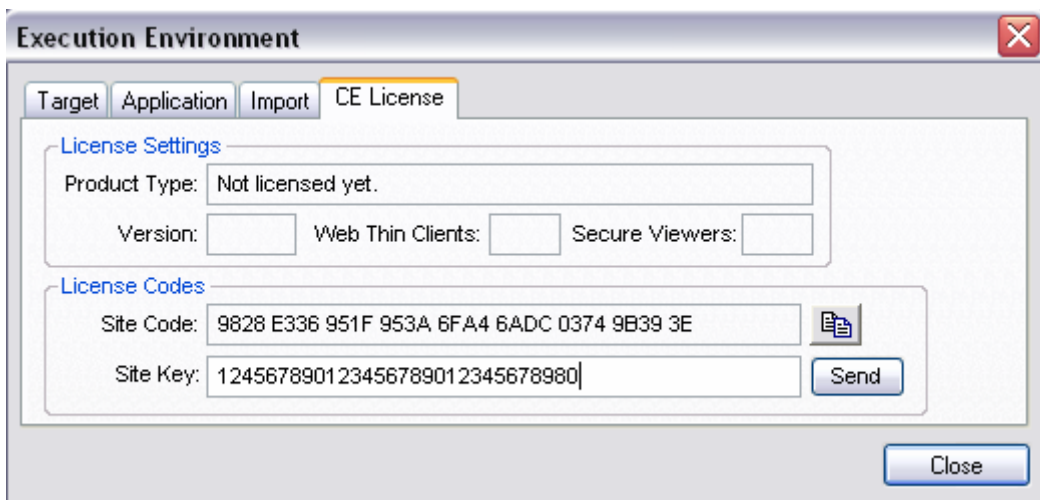


**CE License**

17. To register the Indusoft Web Studio License onto the Windows CE Panel PC, select the CE License tab.
18. Mouse select the Site Code and Ctrl-C to copy it to the clipboard.
19. Or, use the  icon to copy the Site Code to the clipboard.



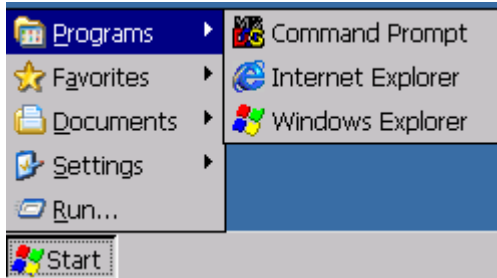
20. Open a new email and paste the Site Code into the body with Ctrl-c. Or, Right click paste.
21. Send the email to [support@ivcdisplay.com](mailto:support@ivcdisplay.com).
22. You will receive an email with the Site Key.
23. Simply copy the Site key and paste it into the Indusoft CE License of the Execution Environment.



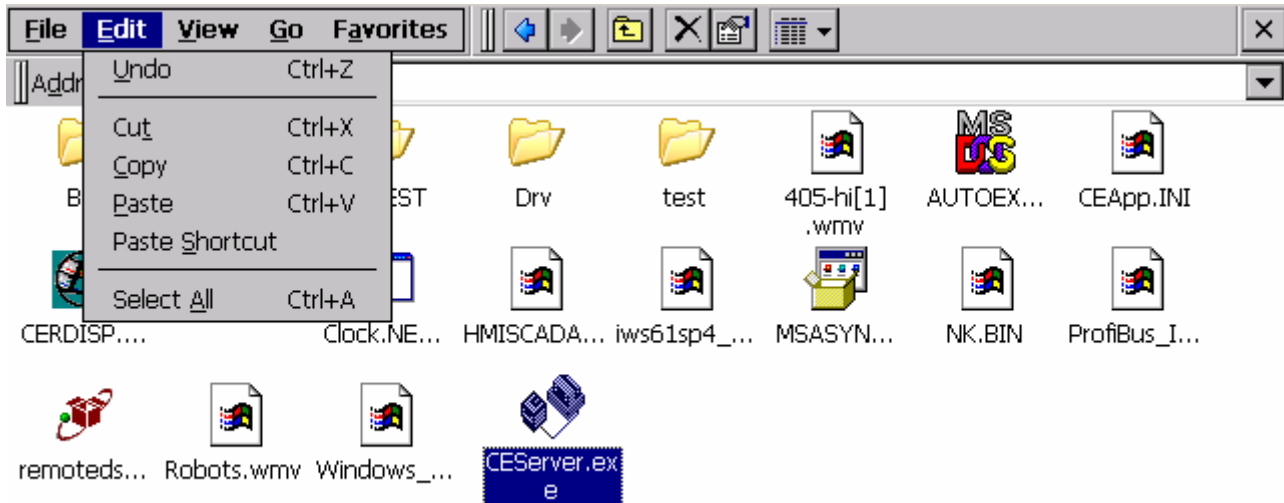
- 24. Then Use the Send button to send the Site key to the Windows CE panel. The Site key is written to the project on the location of CEServer.exe.
- 25. *Note: We suggest that the CEServer.exe is placed in a removable media such as CF card or USB Flash Drive.*

**Configure Windows CE application Launch on Boot**

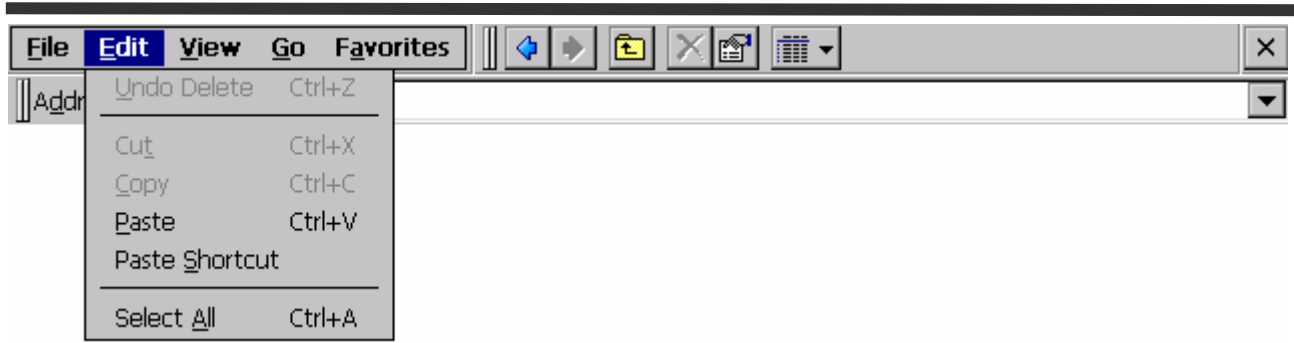
- 26. Select Start>Windows Explorer.



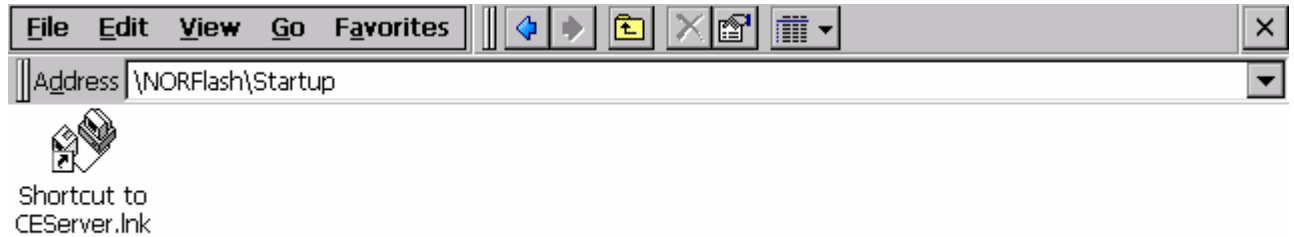
- 27. Navigate to your HardDisk or StorageCard, what ever you selected in step. Select CEServer.exe and Edit>Copy the file.



- 28. Navigate to folder NORFLASH/Startup folder and Edit>Paste Shortcut of CEServer.



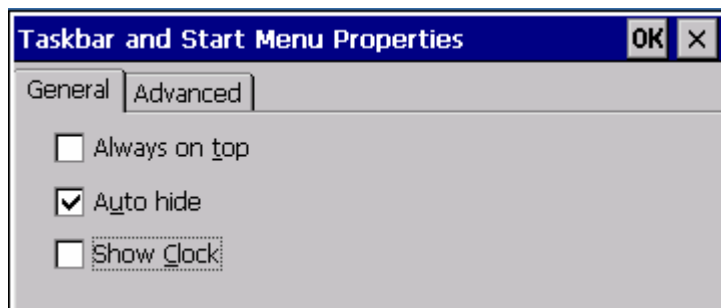
29. You will see the Shortcut to CEServer. Close Windows Explorer.



30. To Hide the Windows CE Task Bar select Start>Settings>Task Bar and Start Menu...



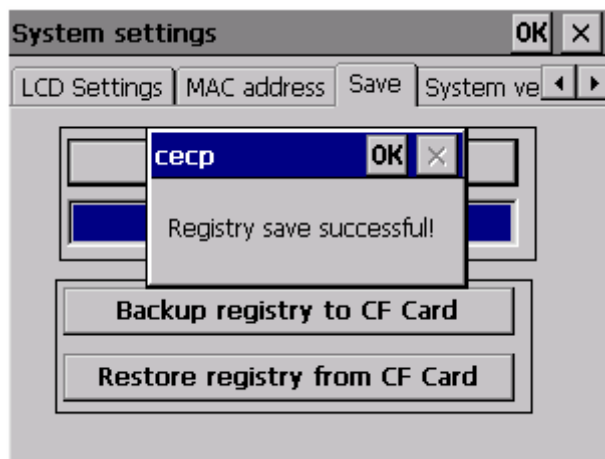
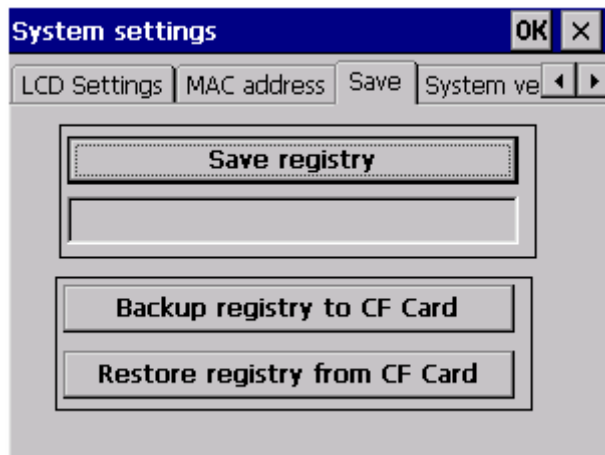
31. Check Auto hide and click OK.



32. From the desk execute CECP.



33. From the Save tab select Save registry. This will save your settings on NORFLASH/Startup.



Comments:



Do not place CEServer.exe into NORFLASH/Startup. The Execution Environment will install the application in NORFLASH/Startup and crash because there is not enough memory.

Save the registry with CECP to save changes to Windows CE.

When updating to a new version of Indusoft Web Studio (e.g. SP4, SP5...), you need to make sure to copy the new version of CEServer. Also, when doing so, you should download all system files, not just newer (good idea to start fresh).

Address any comments or questions to [support@ivcdisplay.com](mailto:support@ivcdisplay.com).