

**Description:**

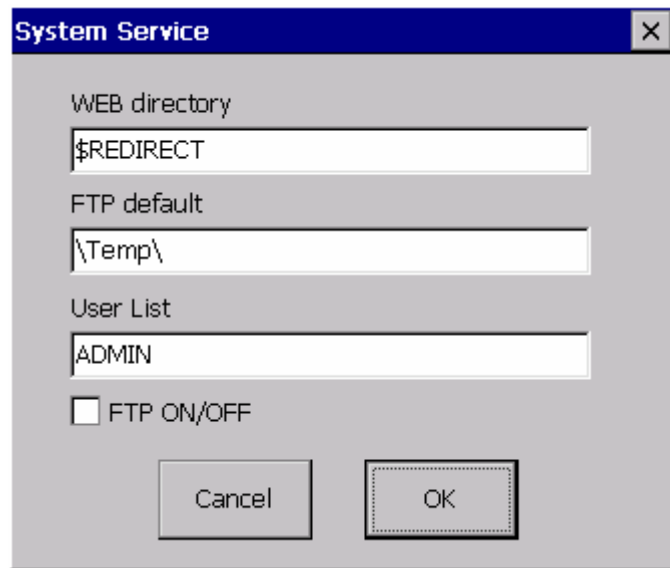
This document describes the steps necessary to configure the NP-700i to be a web server.

The default directory for the web services is \windows\www\wwwpub and the default start page is default.htm.

1. From the desktop start CECP.



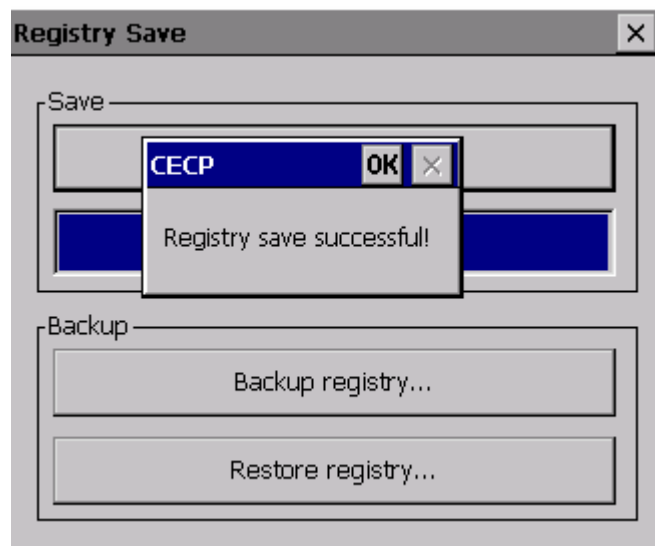
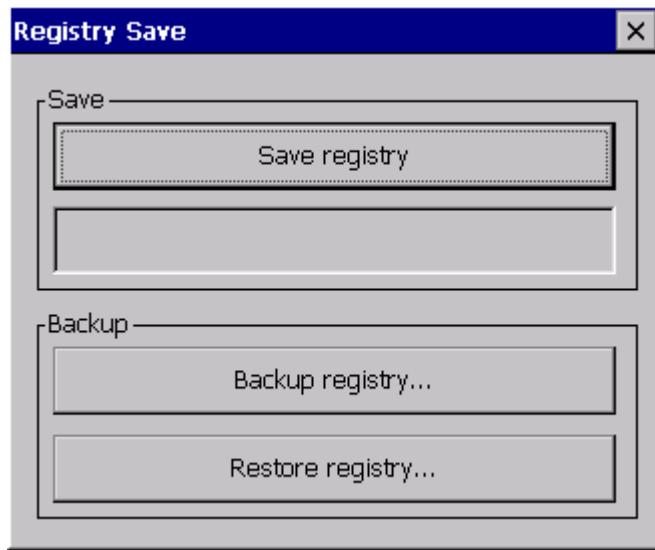
2. Start System Services.



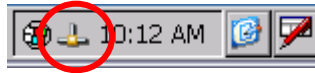
3. Change the Web directory to the location of your web page files.



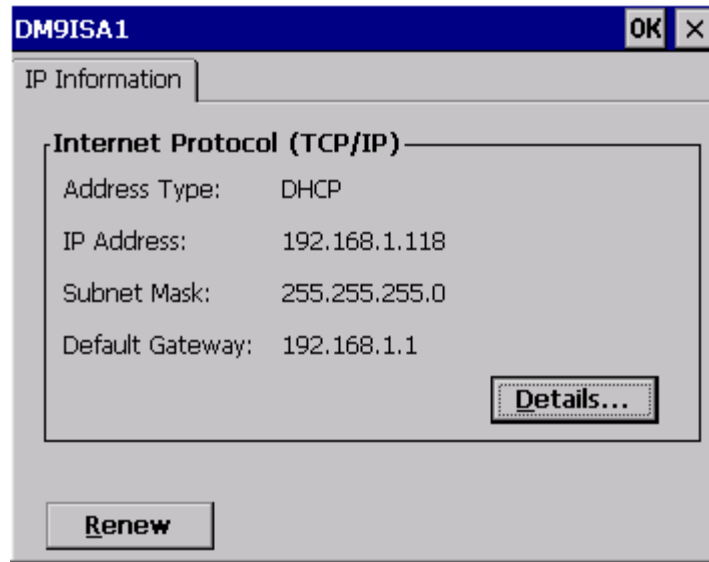
4. Save the registry.



5. On the desktop Task bar double click on the network icon.



6. Take note of the IP Address.



7. Reboot the NP-700i to load the registry changes.
8. From a PC start Internet Explorer and enter the IP address of the NP-700i.  
This will display the \StorageCard\ default.htm.