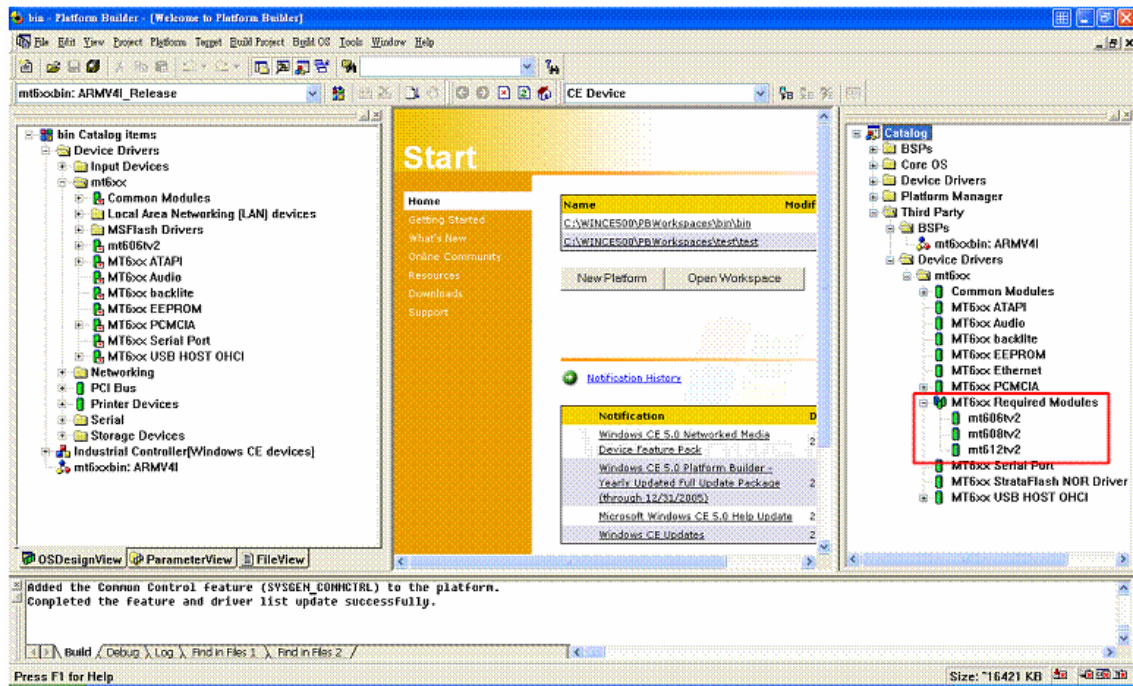


1. Unzip the mt6xx\_bin\_CE50\_070413.zip to C:\WINCE500\PLATFORM\
2. Unzip the bin.rar to C:\WINCE500\PBWorkspaces\
3. Run PB5.0, import the binary BSP.
4. Open the C:\WINCE500\PBWorkspaces\bin\bin.pbxml
5. Select the MT6xx Required Modules to select the HMI model.



6. Click [Build OS]/[Sysgen]
- If the change parameter files, only need to use build & Sysgen Current BSP

