



---

## Description:

Microsoft Windows CE.NET Operating Systems are developed using the Microsoft Windows CE 4.2-Platform Builder 4.2. Many advanced users of Windows CE have requirements for their systems that may not be provided in the base (Windows 4.2 CE.NET Pro) system offered by IVC Displays. The resources to modify the Windows CE Image and add or remove features are available by IVC Displays. This document describes the steps necessary to set up the EP93xx Sample project and build the Windows CE 4.2.NET Pro Image (NK.BIN) using the Platform Builder 4.2.

## Licensing Disclaimer:

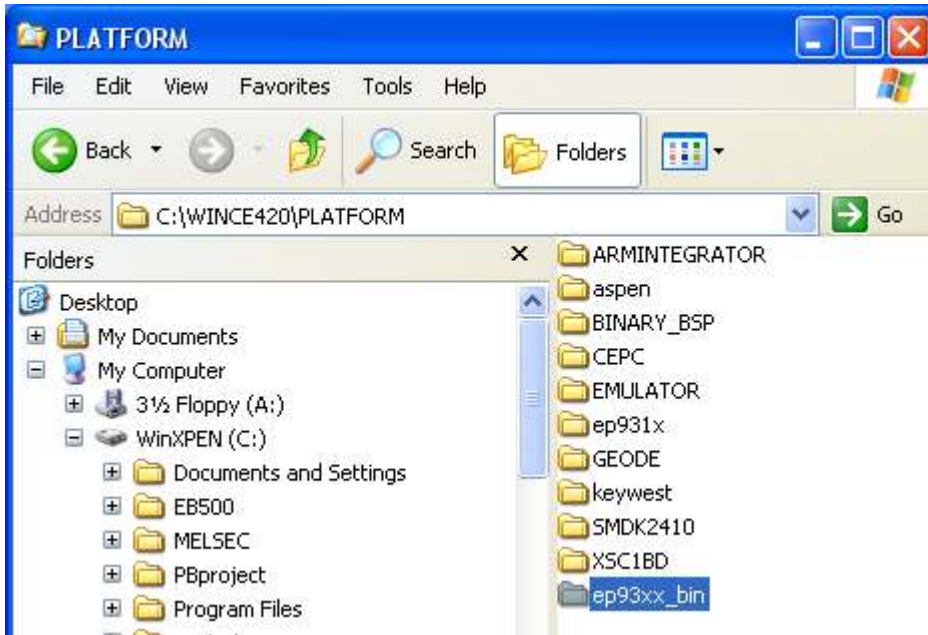
Windows CE operating systems is licensed through Microsoft Corporation. The license provided by IVC Displays is for the Windows CE 4.2 NET PRO. The licensing is evident by the label on the back of the NP-660S. The addition of other features such as the "File Viewers" may require that you pursue additional licensing from Microsoft Corporation.

## System Request

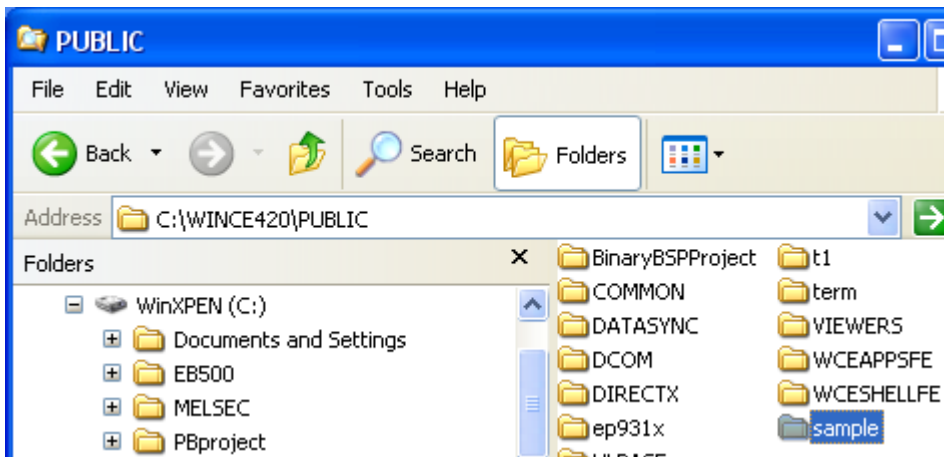
1. Windows CE.NET 4.2 Platform Builder.
2. EP93xx Binary BSP.
3. Binary BSP sample project.
4. Compact Flash Card (FAT format, 32MB or more) for download CE image.

## Step

1. Copy ep93xx\_bin to C:\WINCE420\PLATFORM

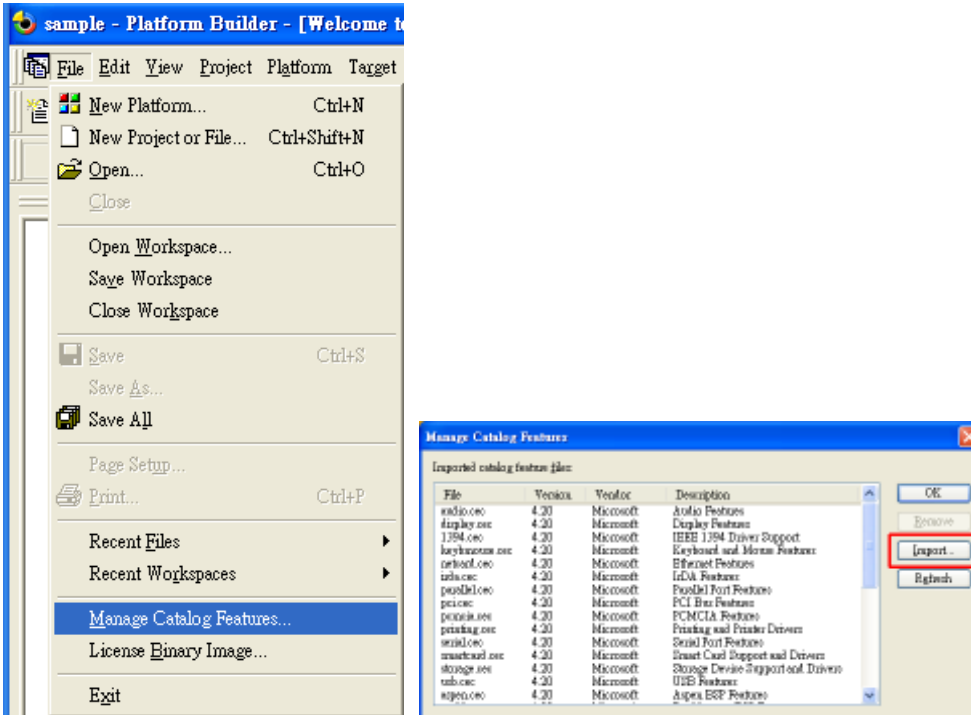


2. Copy sample project to C:\WINCE420\PUBLIC



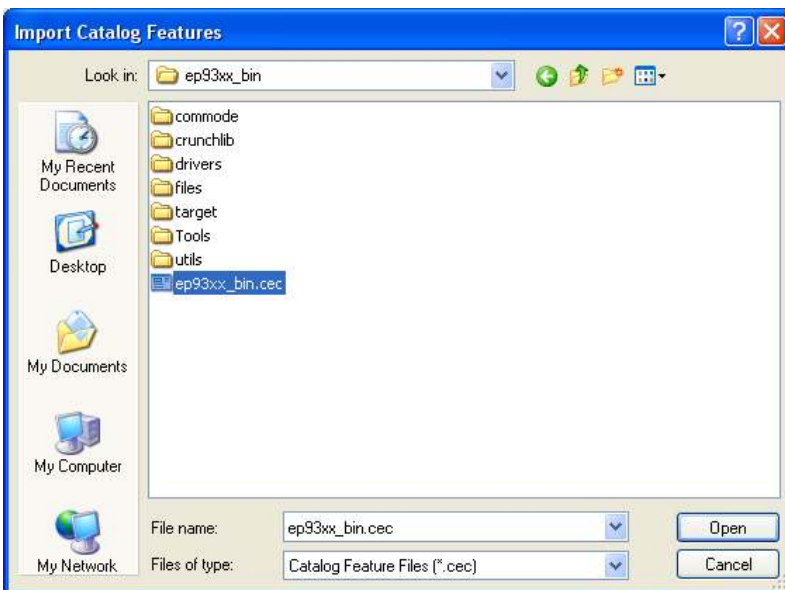
3. Copy ts\_cal.lib to \WINCE420\PUBLIC\COMMON\OAK\LIB\ARMV4I\RETAIL  
Replace the existing file.

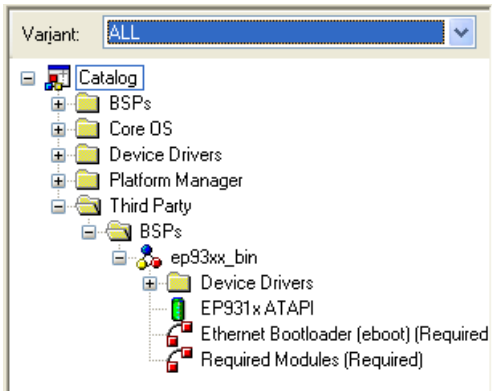
4. Open Platform Builder, Click **File/Manage Catalog Features...**



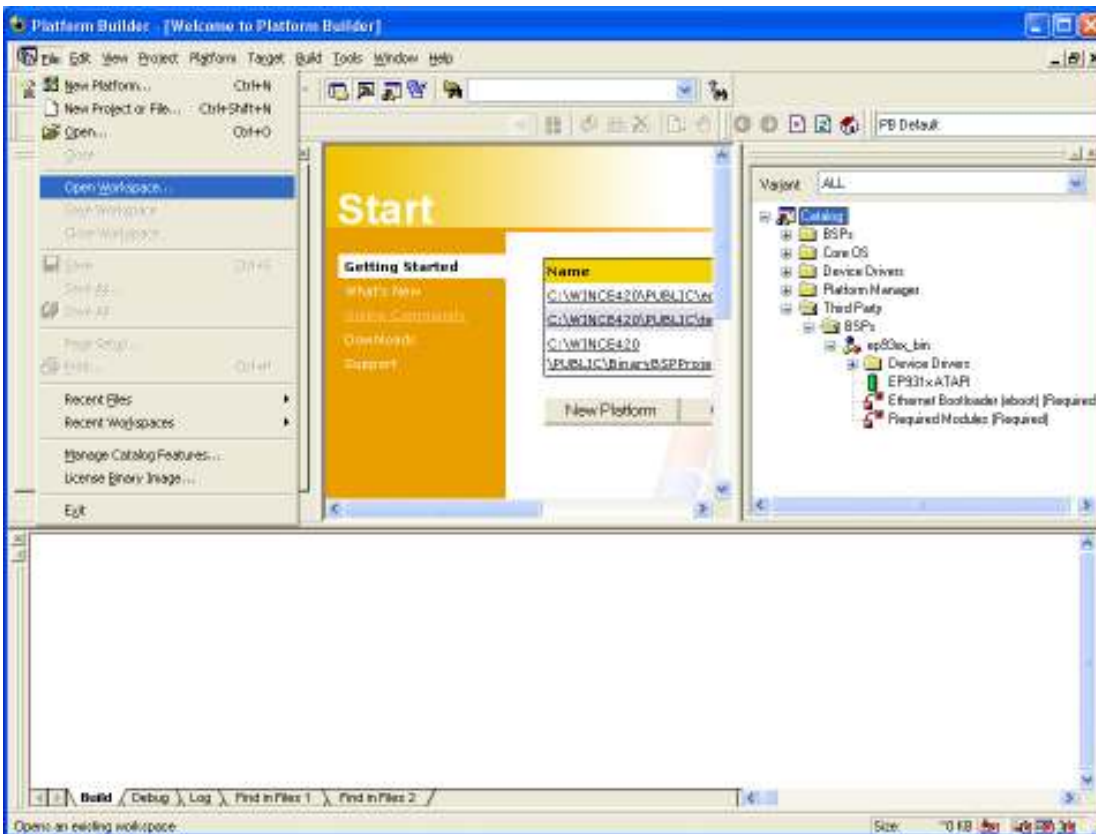
5.

6. Click **Import...**, select **ep93xx\_bin.ccc**, Click **Open** import the catalog

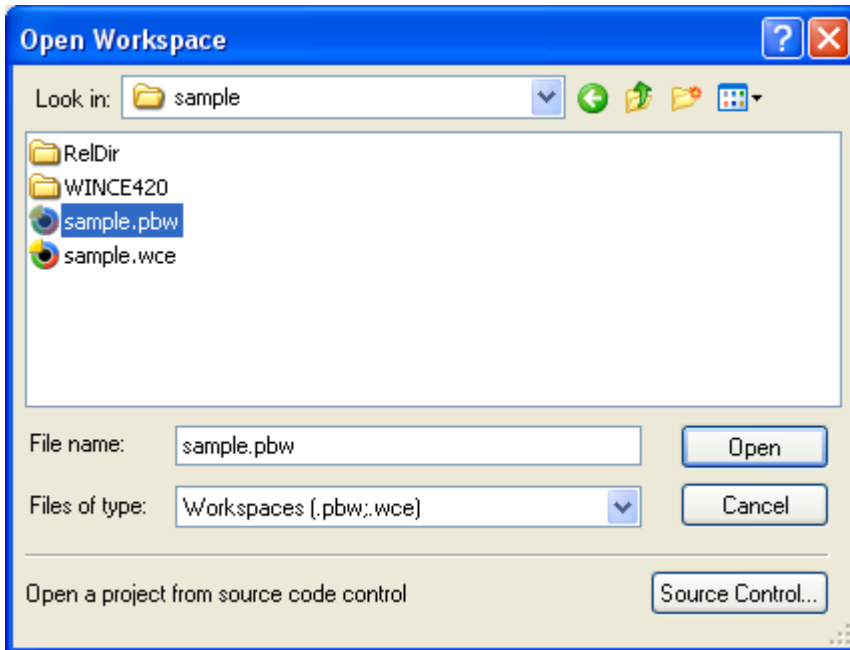


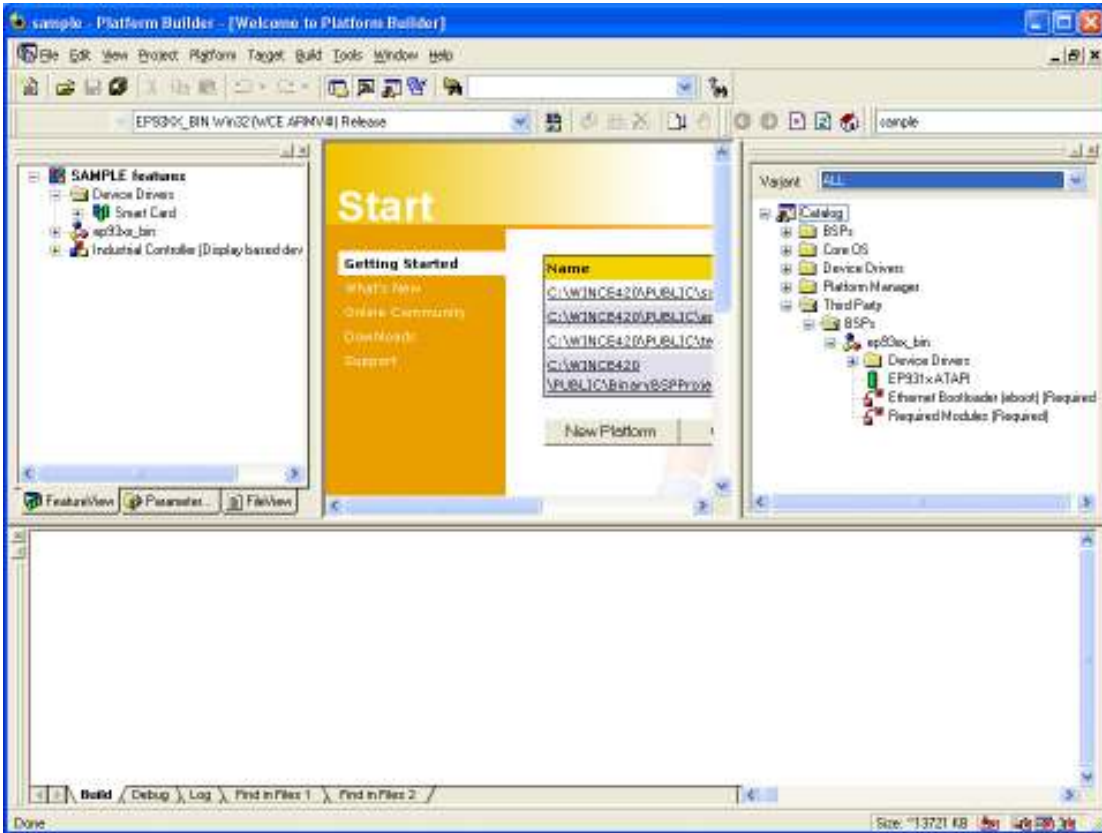


7. Click **File/OpenWorkspace...**



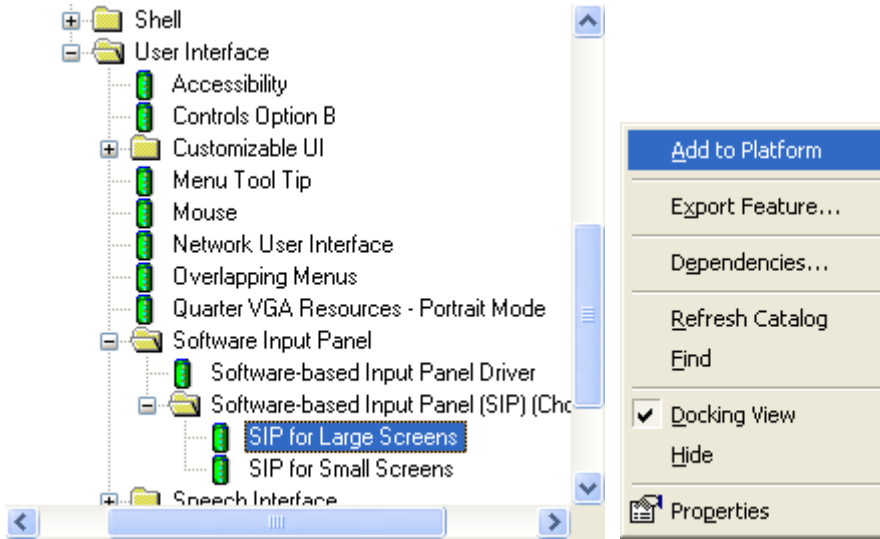
8. Opensample





9. If you want to add a Software Input Panel to the CE image, select "SIP for Small Screens" click mouse right button, Click **Add to Platform**.





10. BuildPlatform.

11. Open folder: C:\WINCE420\PUBLIC\sample\RelDir\EP93XX\_BINRelease

12. Copy the NK.binto CF card then download to NP-660S.